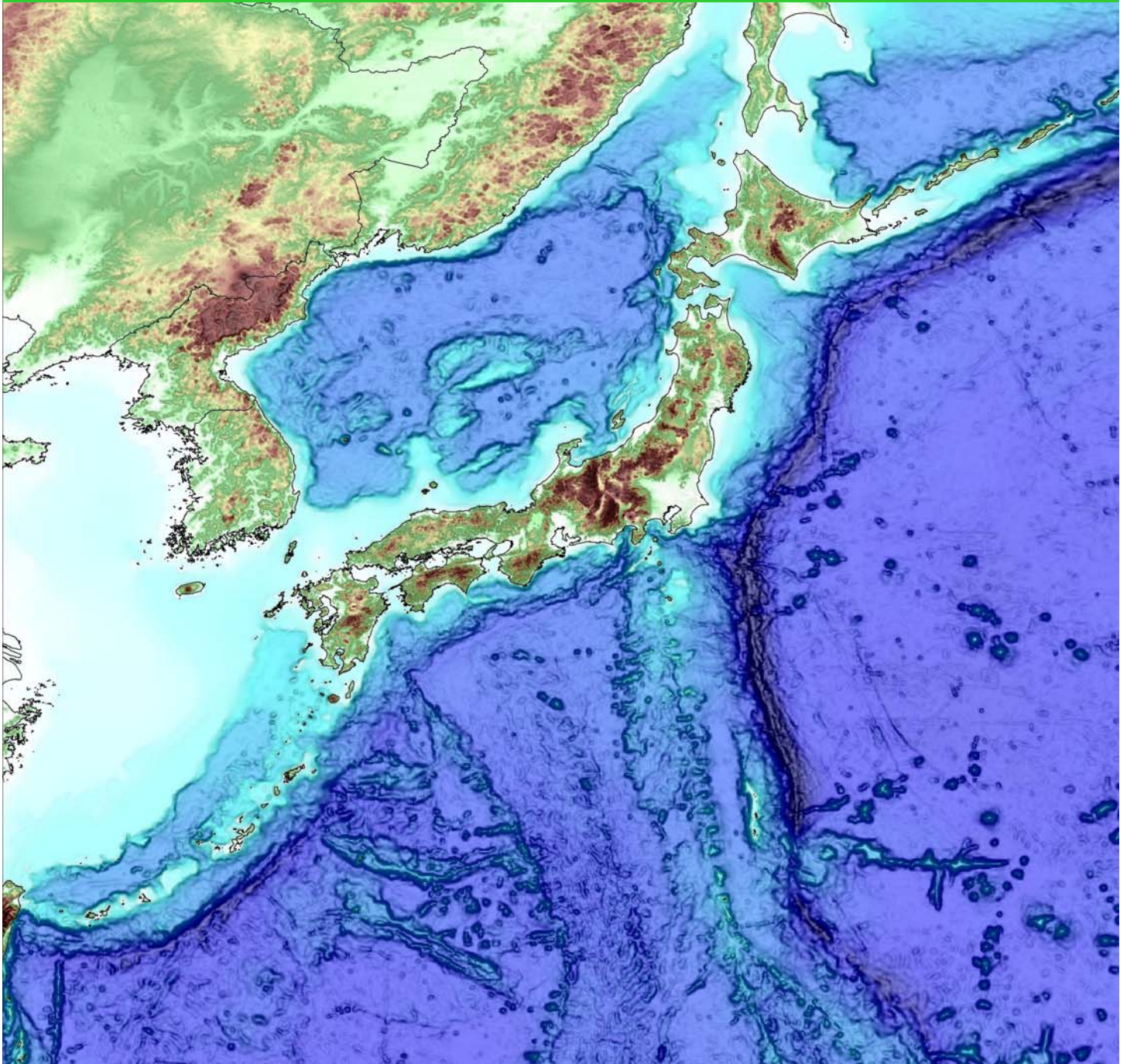




# Japan Society of Engineering Geology

Since 1958

2008



THE JAPANESE NATIONAL GROUP OF THE IAEG

## IAEG-JAPAN

(The International Association of Engineering Geology)



## Chairman Greeting

Japan Society of Engineering Geology (JSEG) is an independent and non-profit-making academic society established in 1958, aiming at "Progress of the research for engineering geology that relate to various exploitation and construction, improvement and development of technology, and for the communication between members". JSEG has been contributed to the achievement of the affluent society through the construction projects of highly public social infrastructure such as the road, railway, water supply facilities, and power plants, and attempting interdisciplinary and overall promotion of investigation and research, progress and spreads of the technology, under organic cooperation of researcher and engineer concerning the engineering geology. JSEG will be received the 50th anniversary from establishment in 2008, and greatly tries to revolutionize to satisfy the demand from present society such as "Achievement of the safe society", "Continuous control of maintenance of the social infrastructure", and "Keeping and restoration of natural global environment" in addition to past "Construction of the social infrastructure".

Although these are difficult problems that will be continuing requested during the future, to work on these solutions, deeply penetrating the nature by coming back to the fundamental science, and enough understanding various demands from present-day society, we think that it is a preferable ideal way to construct "New engineering geology" by a natural science of the earth and an interdisciplinary synthesis of practicing application. JSEG steadily and tenaciously tries this new activity, and is convinced to obtain not only safe society but also safety (trust).

Moreover, JSEG is continuing the international activity as Japan branch of International Association for Engineering Geology and the Environment (IAEG). It widely contributes to the development of the engineering geology, especially various problems on engineering geology in much growth Asia, that is, late consolidation of social infrastructure, natural hazards such as frequent earthquakes, and solution of environmental problems etc, through cooperative and mutual activities with overseas society related to geological features.

We shall act positively as a leader creating advanced technology to do practical solution of the problem, examine surface to underground information in the field and well understand, aiming at the solution of the important problem in natural earth for man activity.

## History of JSEG

- 1958 The first day of February, the Japan society of Engineering Geology (JSEG) established in Tokyo.
- 1974 JSEG joined the International Association for Engineering Geology.
- 1991 JSEG started publishing six issues of Ouyou Chishitsu, the academic journal of JSEG, annually.  
JSEG conducted the first overseas field trip.
- 1992 The city of Kyoto hosted the 1992 general assembly of IAEG.
- 1997 The JSEG website launched. The first Asian Symposium of Engineering Geology held in Tokyo.
- 2005 The Korean Association of Engineering Geology and JSEG concluded an international corporate agreement.
- 2008 JSEG celebrates the 50th anniversary.

## Members' Activity

- (1) To submit papers to Ouyou Chishitsu (the academic journal of JSEG, issued six times per year)
- (2) To present papers at JSEG conferences and symposia (they are also open to non-members)
- (3) To participate in training courses, field studies, domestic and overseas field trips arranged by JSEG (they are also open to non-members)
- (4) To propose and participate collaborative research projects, and to publish the results.
- (5) To publish, obtain, and exchange the latest technical information through the activities mentioned above.

## Overseas Excursion for Engineering Geology

- 1st, Date ;1991 May 4-13, Main theme ;Geology and Dams in France and Italy,  
Participants;22, Leader; Mr. Okamoto
- 2nd,1992 Oct. 11-24, Geology of Gotland island, Euro. Tunnel,Sweden, Netherland, England,  
France, 15, Leader; Mr. Fukutake
- 3rd,1993 June 6-20, IAEG meeting in Montpellier, Geology and Dam in Pyrenees,20,  
Leader; Dr. Kitamura
- 4th,1994 Sep.3-18, 7th IAEG congress in Lisbon, 50, Leader; Dr. Kojima
- 5th,1995 June 25-July 9, Geology in England and Iceland, 24, Leader; Dr. Okada
- 6th,1996 Aug.4-, China, 30th International Geological Congress, 42,
- 7th,1997 June 15-29, June 21-July 6, IAEG meeting, Istanbul, 30, Leader; Dr. Kojima
- 8th,1998 Sep.20-Oct. 3, 8th IAEG Congress in Vancouver, 23, Leader; Dr. Ichikawa
- 9th,1999 Sep.22-Oct.8, IAEG meeting in Katmandu Nepal,27, Leader; Dr. Ichikawa
- 10th,2000 Aug. 5-18, 31st IGC Congress in Rio de Janeiro, IAEG meeting, Excursion for  
Geology of Andes in Peru, 17, Leader; Dr. Yoshida
- 11th,2002 Sep. 14-25, 9th IAEG Congress in Durban South Africa, Kimberley, Cape Town,  
15, Leader; Dr. Oshima
- 12th,2004 Aug. 19-28, 32nd IGC Congress in Firenze Italy, Chamonix France, 12,  
Leader; Dr. Oshima
- 13th,2006 Sep.4-13, 10th IAEG Congress in Nottingham, Geology of south England, 10,  
Leader; Dr. Inoue

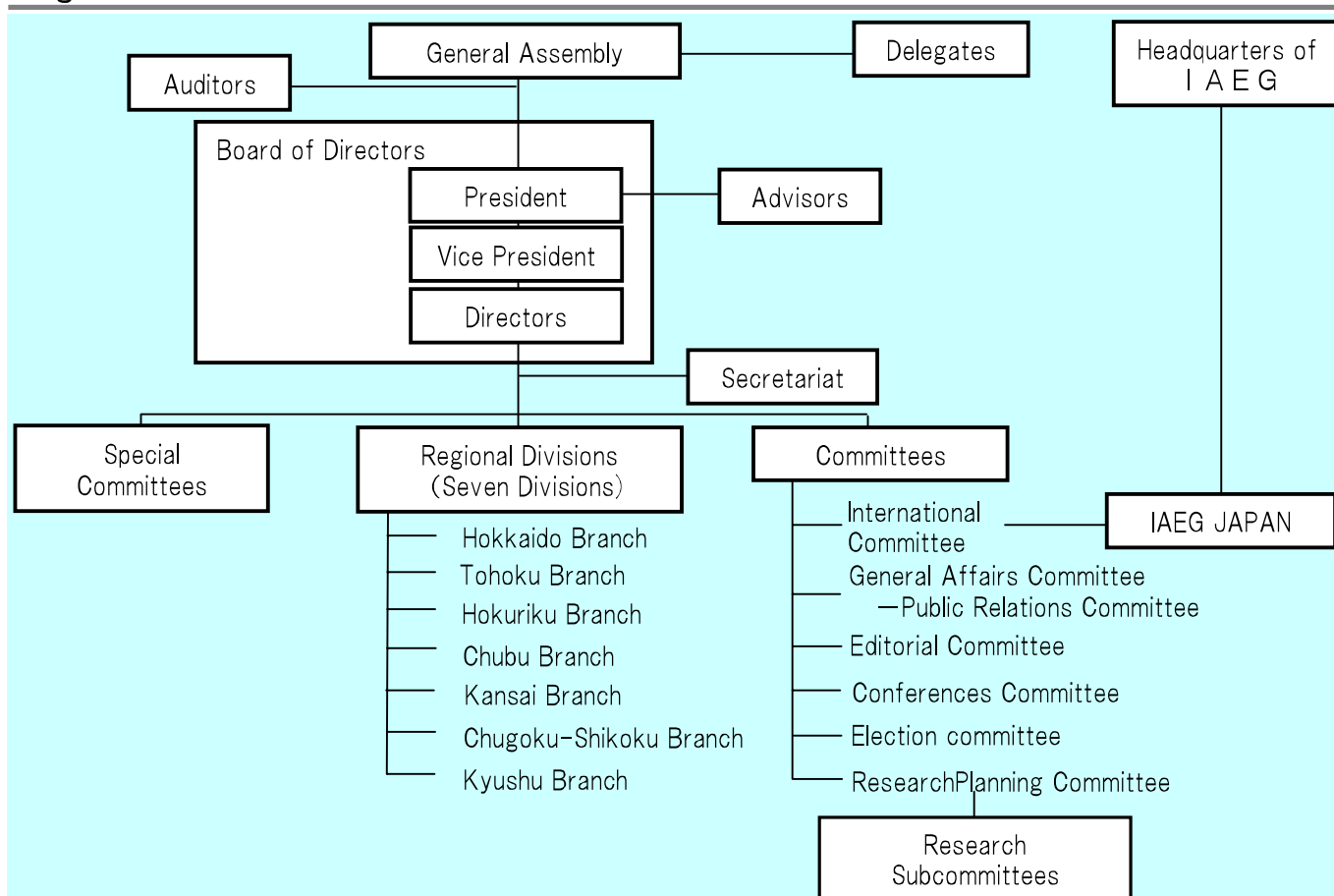


The 12th Overseas Field Trips  
(2004:Mont-Blanc(4,807m)  
seen from Italy)



The 13th Overseas Field Trips  
(2006: Britain. Chalk layer in  
Seven Sisters coast)

## Organization



## Asian Symposium on Engineering Geology and the Environment

This Symposium has been held at 2 years intervals, to encourage communication and activity for engineering geologists of Asian countries.

First, Tokyo Japan	
Date	1997 Nov. 13-14
Theme	Engineering Geology for Dam
Participants	6 keynote lecture 3 engineering geologists were invited from Korea, China and Taiwan.
Study tour	Constructing site of Kazunogawa Hydraulic Power Plant.
Second, Bangi Malaysia	
Date	1999 Sep. 23-25
Theme	6 main theme for engineering geology and environment
Participants	8 key note lectures and 75 papers (15 from Japan) were presented from 15 countries.
Study tour	Sunway Lagoon and Mine Resort City
Third, Yogyakarta Indonesia	
Date	2001 Sep. 3-6
Theme	Natural resources Management for regional Development in Tropical Area.
Participants	About 200 participants, 5 keynote lectures, 44 presentation (18 from Japan) from 6 countries.
Study tour	Merapi active volcano.
Forth, Hongkong	
Date	2004 May 2-4
Theme	Engineering Geology for Sustainable Development in Mountainous Areas
Participants	47 participants( 12 from Japan) from 8 countries 3 keynote lectures and 2 invited lectures, 24 papers (6 from Japan) were presented.
Fifth, Katmandu Nepal	
Date	2005 Sep.28-30
Theme	Engineering Geology for Major Infrastructure Development and Natural Hazards Mitigation Detailed report was not informed.
Sixth, Seoul Korea	
Date	2007 Oct. 16-19
Theme	Asian Regional Conference on Geohazard in Engineering Geology
Participants	197 participants (43 from Japan), 5 keynote lecture, 49 oral presentation (22 from Japan), 30 poster presentation (6 from Japan)
Study tour	Constructing sites of tunnel for subway and road, additional spill way of rock fill Dam.

## Technical Symposium and the theme in Japan

- 1995 Tunneling and groundwater
- 1996 Engineering Geology and Topography
- 1997 Engineering Geology for Rock Slope
- 1998 Earthquake Disaster and Deep Foundation in Urban Area
- 1999 Various Factors of Fluctuations in Ground-water with relation to Engineering Geology
- 2001 Re-estimation of Geophysical Prospecting in Engineering Geology
- 2002 Tendency and prospect of Rock Mass Classification
- 2003 Existing State of Ground Exploration and Evaluation Technology
- 2004 Problem of Underground Water Flow and its Engineering Geological Approach in several Geological Scale
- 2005 A new development of engineering geomorphology – based on the real state of the disasters by the Mid Niigata Prefecture Earthquake 2004 in Japan –
- 2006 Some Problems in Engineering Geology at Accretionary Prism
- 2007 Rock Classification as a Coordinate Function Binding Geological Survey with Design and Execution
- 2008 Non-artificial Environmental Issues



## Books published by JSEG

- 1981 Faults on construction works
- 1987 Rock Classification (in English)
- 1987 The present state and view of geology for natural disaster prevention
- 1992 Rock Mass Classification in Japan (in English/Japanese)
- 1992 Engineering Geology of Dams in Japan (in English)

## Photograph



A large-scale landslide in the upstream basin of the *Aratogawa* reservoir, caused by the *Iwate-Miyagi Nairiku* earthquake occurred in 2008.



Outcrop of *Nojima* fault that caused the *South Hyogo* prefecture Earthquake in 1995 (*Hokudan-cho* earthquake memorial park)



The lava dome formed after the eruption of Mt. *Unzen-Fugendake* (1990-1995)



Figure shows that an excavated base for the *Mikawasawa* Dam exposes Mesozoic sandstone and shale with porphyrite intrusion, which belong to the *Ashio* Accretionary Complex located in the northern Kanto district in Japan.

The cover explanation: color altitude inclination chart (ELSAMAP) around the Japanese Islands . Color altitude inclination chart ELSAMAP is new geographical features expression technique for uniting "Change in the altitude" and "Change in the inclination". DEM used is SRTM3(Japanese Islands) and ETOP2(Surrounding of the Japanese Islands).

(KOKUSAI KOGYO Co.,LTD. offered)



## Japan Society of Engineering Geology

Headquarters Ochanomizu-Sakurai Bldg. 2-3-14,Kandasurugadai chiyoda-ku Tokyo. 101-0062,Japan  
Phone: 03-3259-8232 Fax: 03-3259-8233 URL : <http://www.soc.nii.ac.jp/jseg/>