



The 15th Asian Regional Conference (ARC-15) of IAEG

国際応用地質学会 (IAEG)
第15回アジア地域会議

Welcome to Nepal

開催地: ネパール、開催日時: 2025年11月27日～29日



＜ARC-15の概要＞ 学会HPに情報を掲載しています。

開催テーマ: “Geological Engineering for Societal and Sustainable Development”

開催日程: 2025年 11 月 27日～29 日

会場: Hyatt Regency Kathmandu

(ハイアット リージェンシー カトマンズ)

主催: IAEG/バングラデシュナショナルグループ(IBNG),
ネパール応用地質学会(NSEG),

共催: ジャハングルナガル大学(バングラデシュ), 香川大学(日本)

11/24-26	プレ巡検(Ex-1～Ex-3) ワークショップほか(於: ネパール)
11/27	開会式, 基調講演, 技術セッション, レセプション
11/28	基調講演, 技術セッション, IAEG YEGワークショップ
11/29	基調講演, 技術セッション, 閉会式
11/30-12/2	ポスト巡検(Ex-4～Ex.8) ネパール・バングラデシュ

ARC-15では日本応用地質学会から提案したアウトリーチや教育などをテーマにした“Communication and education based on the knowledge of engineering geology”のセッションもあります。皆様の発表申し込み(2025年10月30日〆切)をお待ちしています。

詳細はHP(<https://arc15.nseg.org.np>)をご確認ください



多くの方に第15回ARCにご参加いただき、2027年に日本で開催予定の
第16回ARCに向けて盛り上げていきましょう！！

第 17 回海外応用地質学調査団の募集のお知らせ
～第 15 回 IAEG アジア地域応用地質学シンポジウムへの参加～

国際委員会

第 15 回 IAEG アジア地域応用地質学シンポジウム(ARC-15)が、ネパールのカトマンズで開催されます。カトマンズでの同シンポジウムの開催は、第 5 回、第 11 回に続く 3 回目の実施となります。

日本応用地質学会の会員の皆様には積極的に参加、あるいは声掛けをお願いいたします。国際委員会では、ARC-15 に合わせて第 17 回海外応用地質学調査団を編成する予定にしています。

ネパールの地形は、地質構造帯に沿った東西方向の地形列からなります。北部に位置するヒマラヤ山脈は、約 5,000 万～4,000 万年前にインド亜大陸とユーラシア大陸が衝突したことで形成され、8,000 m 級的高峰が連なります。中部には山地や盆地、南部にはインド平原に繋がる低地が広がっており、1 つの国の中で、ドラマティックに変化する地質、地形、気候、植物相を観察することができます。

ARC-15 は巡検も充実しており、エベレストベースキャンプへの航空機によるツアーや 2015 年のゴルカ地震の足跡をたどるツアー、ネパール東部の地質をめぐるツアーなどが計画されています。さらに、バングラデシュにあるパドマ橋(ユネスコ世界遺産に登録予定)を訪問するツアーも用意されています。

若手会員は、海外支援制度として「田中治夫国際積立金助成事業」が用意されています。若手会員の方は積極的な活用をぜひご検討ください。

<ARC-15 の概要> 学会 HP に情報を掲載しています。

開催テーマ：“Geological Engineering for Societal and Sustainable Development”

開催日程：2025 年 11 月 27 日～29 日

会場：Hyatt Regency Kathmandu(ハイアット リージェンシー カトマンズ)

主催：IAEG バングラデシュ国立グループ(IBNG)、ネパール技術地質学会(NSEG)、共催：ジャハングルナガル大学(バングラデシュ)、香川大学(日本)

シンポジウム日程

11 月 24 日(月)～26 日(水)	プレ巡検、ワークショップほか(於：ネパール)
11 月 27 日(木)	開会式、基調講演、技術セッション、レセプション
11 月 28 日(金)	基調講演、技術セッション、IAEG YEG ワークショップ
11 月 29 日(土)	基調講演、技術セッション、閉会式
11 月 30 日(日)～12 月 2 日	ポスト巡検

投稿等の詳細は案内ホームページをご覧ください：<https://arc15.nseg.org.np/>

<調査団計画概要>

11月24日(月) 東京(成田), 大阪(関空)からカトマンズへ移動(マレーシア経由を予定)(深夜到着)
11月25日(火) 市内観光／自由行動
11月26日(水) プレ巡検に参加／自由行動
11月27日(木)～11月29日(土) ARC-15 参加
11月30日(日)～12月2日(火)
12月3日(水) ポスト巡検に参加(ネパール東部, ジャパ, イラムほか)
12月4日(木) カトマンズから東京(成田), 大阪(関空)に移動, 帰国

330,000 円程度(参加人数 20 人で設定, 一人部屋利用)の見込みですが, 参加 人数により変動します。二人部屋利用の場合は, 4 万円程度の減になります。

注意;

- ・ARC-15 の登録費は早期割引(6 月 15 日まで)で 550 \$ となっています。巡検に参加する場合は, 調査団とは別に各自で申し込みと支払をします。
- ・航空券をご自身で手配し、現地の行動のみ調査団に合流することも可能です。この場合の費用につきましては、別途相談となります。
- ・調査団の旅程としては、プレ巡検 (Ex-3) とポスト巡検 (Ex-6) を予定していますが、その他の巡検に参加していただくことも可能です。日本出入国の旅程が海外調査団と異なる場合は、航空券の手配はご自身でお願いします。
- ・ネパールに入国するためには査証 (ビザ) が必要です。

(http://www.anzen.mofa.go.jp/m/mbimmigration_010.html).

- ・ネパールへの入国に際して、予防接種の義務はありませんが、長期滞在や特定の地域を訪れる場合に推奨される予防接種があります。

調査団行程概要

年月日	時間, 場所,	交通機関	摘要
11月24日(月)	成田空港集合 第二ターミナル マ レーシア航空 集合時間 7時00分 (予定) 成田空港発 10:05 MH89 クアラルンプール着 17:00 クアラルンプール発 20:00 MH114 カトマンズ着 22:30	関西空港集合 第一ターミナル マ レーシア航空 集合時間 7時00分 (予定) 関西空港発 09:55 MH53 クアラルンプール着 15:55 クアラルンプール発 20:00 MH114 カトマンズ着 22:30	クアラルンプール空港で航空機乗換 着後 ホテルへ移動 Hotel Moonlight、Luxe Inn Boutique Hotel など中級ホテルを検討中
11月25日(火)	市内観光(自由行動)		宿泊ホテルにて朝食 宿泊ホテルにて夕食
11月26日(水)	Ex-3 参加(市内巡検)		宿泊ホテルにて朝食 宿泊ホテルから車で HYATT ホテルま で移動 会場から車で宿泊ホテルへ移動 宿泊ホテルにて夕食
11月29日(土)	ARC15 参加 ・夕食(バンケット)		宿泊ホテルにて朝食 宿泊ホテルから車で HYATT ホテルま で移動 ARC15 会場 HYATT REGENCY 会場から車で宿泊ホテルへ移動
11月30日(日) ～12月2日 (火)	ポスト巡検参加 ※調査団では、Ex-6 に参加する場合を想定し ていますが、Ex-6 以外のポスト巡検への参加 も可能です。		宿泊ホテルにて朝食 宿泊ホテルから車で HYATT ホテルま で移動 ARC15 会場 HYATT REGENCY OR エクスカーショ
12月3日(水)	成田空港行 カトマンズ発 13:00 MH171 クアラルンプール着 20:10 クアラルンプール発 23:35 MH88	関西空港行 カトマンズ発 13:00 MH171 クアラルンプール着 20:10 クアラルンプール発 22:40 MH53	宿泊ホテルにて朝食 クアラルンプール空港で航空機乗換
12月4日(木)	関西空港着 05:40 成田空港着 07:15		着後解散 着後解散



ARC-15 of IAEG

The 15th Asian Regional Conference of IAEG

Geological Engineering for Societal and Sustainable Development



Jointly organized by Nepal and Bangladesh



Second Circular



27-29 November, 2025

Kathmandu, Nepal

<https://arc15.nseg.org.np/>

Organizers:



Co-organizers:



Sponsors:



Nepal Society of Engineering Geology (NSEG)

IAEG Bangladesh National Group (IBNG)



The ARC-15 of IAEG

The IAEG Bangladesh National Group (IBNG) and the Nepal Society of Engineering Geology (NSEG), along with partner organizations in Bangladesh, Japan, and Nepal, are organizing the 15th IAEG Asian Regional Conference (ARC-15) in Kathmandu, Nepal from November 27-29, 2025. This prestigious international conference series has been a crucial platform for advancing Engineering Geology in Asia. Over the years, geoscientists and engineers from around the world have contributed to and greatly benefited from the discussions at past IAEG Asian Regional Conferences. The upcoming event will be another key milestone in enhancing geoengineering knowledge and furthering the understanding of Engineering Geology in this region.

This will mark the third time Nepal is hosting an IAEG Asian Regional Conference, reaffirming its status as a favored destination for geoscientists and tourists alike. While ARC-15 was initially planned to be held in Dhaka, Bangladesh, the venue has now been shifted to Kathmandu, Nepal. The conference serves as a forum for geoscientists and engineers to engage in collegial discussions and share the latest research findings in the fields of Engineering Geology and related subjects. Both IBNG and NSEG have received an overwhelming response from the global geoscience community, and this event is poised to be another milestone in the history of ARC.

This first circular is being issued to provide important information about the conference. Pre-registration is now open through the official conference website (<https://arc15.nseg.org.np/>). Geoscientists and engineers working in geoengineering, geotechnics, geology, disaster risk management and engineering geology are kindly encouraged to submit their pre-registration forms along with their details before the stated deadline. Your cooperation will greatly assist the organizers in planning and executing this significant event successfully.



ARC-15 of IAEG

27-29 November, Kathmandu, Nepal



Conference Venue

The ARC-15 will take place at Hyatt Regency Hotel in Nepal's capital, Kathmandu, the largest city in the country, with an estimated population of around five million. Kathmandu, together with its neighboring cities Lalitpur and Bhaktapur, form the Kathmandu Valley. This valley, known for its historically significant cultural monuments and ethnic delicious cuisines draws millions of international and domestic tourists each year. It includes three major and two minor urban areas, along with several rural communities, housing nearly 20% of Nepal's population. Situated at an average altitude of 1,350 meters, the valley floor consists of ancient lake sediments, reaching depths of approximately 600 meters in certain areas. All key events for the ARC-15 will be hosted at Hyatt Regency Hotel, Bouddha, Kathmandu, with field excursions planned at various locations across Nepal.



World Heritage at Bhaktapur



Hyatt Regency, Bouddha, Kathmandu-The ARC-15 Venue, <https://www.hyatt.com/hyatt-regency/en-US/kathm-hyatt-regency-kathmandu>

Conference venue hotel agreed for special discount to the ARC-15 participants.

Visit: <https://arc15.nseg.org.np/hyatt>

Hotel Radisson situated at city centre area is also providing special discount for the participants of ARC-15.

Visit: <https://arc15.nseg.org.np/radisson>



HYATT REGENCY KATHMANDU



RADISSON HOTEL KATHMANDU



Conference Format

Following the international conference formats, thematic oral and poster sessions have been planned within a single venue. Parallel sessions will be provided for various themes in order to provide all participants an opportunity to present their presentations. Besides, booths for exhibiting advanced technologies and R&D methodologies are highly encouraged inside the premises of the conference venue.

Important Dates

30 Oct. 2024	Conference 1st circular and pre-registration open
30 Jan. 2025	Conference 2nd circular and registration open with Extended Abstract (two pages) submission and payment of early bird registration fee
15 Jun. 2025	Conference early bird registration fee payment deadline
30 Aug. 2025	Conference 3rd circular
15 Oct. 2025	Conference 4th circular, deadline of conference regular fee
30 Oct. 2025	Final Extended Abstract (two pages) submission
15 Nov. 2025	Conference final circular
27 Nov. 2025	Conference on site registration and full payment of registration fee
31 Dec. 2025	Deadline of submission of Full Paper
31 Jul. 2026	Publication of Proceeding Volume as Vol. 3 (No. 1) of Asian Journal of Engineering Geology (www.ajeg.nseg.org.np)
31 Dec. 2026	Publication of Proceeding Volume as Vol. 3 (No. 2) of Asian Journal of Engineering Geology

Conference Program Plan

24-26 Nov. 2025	Pre-conference excursions, Trainings and Workshops both in Nepal
27 Nov. 2025 (Thu.)	Inaugural program followed by technical sessions and Welcome Reception Dinner
28 Nov. 2025 (Fri.)	Technical sessions, Evening IAEG YEG Party sponsored by NSEG for Young Engineering Geologists (YEG) members of IAEG
29 Nov. 2025 (Sat.)	Technical sessions and closing ceremony
30 Nov. - 2 Dec. 2025	Post-conference excursions both in Nepal and Bangladesh



Keynote Speakers



Dr. Vassilis P. Marinos

Advancements in Tunneling: The Role of Engineering Geology in Design and Construction Over the Last 30 Years



Prof. Dr. Shuichi Hasegawa

Significance of Dissected Deep-Seated Landside Topography and Hydrothermal Alteration in Active Mountain Belts



Dr. Ann Williams

Climate Change: Closing the Gap between Challenges Faced by “Developing” and “Developed” Countries



Prof. Dr. rer. nat. Muhammad Qumrul Hassan

Smart Water Management for Sustainable Development: Bridging Groundwater -Surface Water Dynamics Amid Climate Change



Professor Manchao He

Cross-Fault Newton Force Measurement for Earthquake Prediction



Prof. Dr. Christian Zangerl

Deep-Seated Rock Slides: Understanding Processes and Assessing Impacts on Settlements and Infrastructure



Dr. Shahid Azam

New Methods for Characterizing and Modeling the Engineering Behavior of Expansive Soils



Prof. Dr. Trilok Nath Singh

Rockfall Prediction and Prevention in High Hills of Deccan Trap



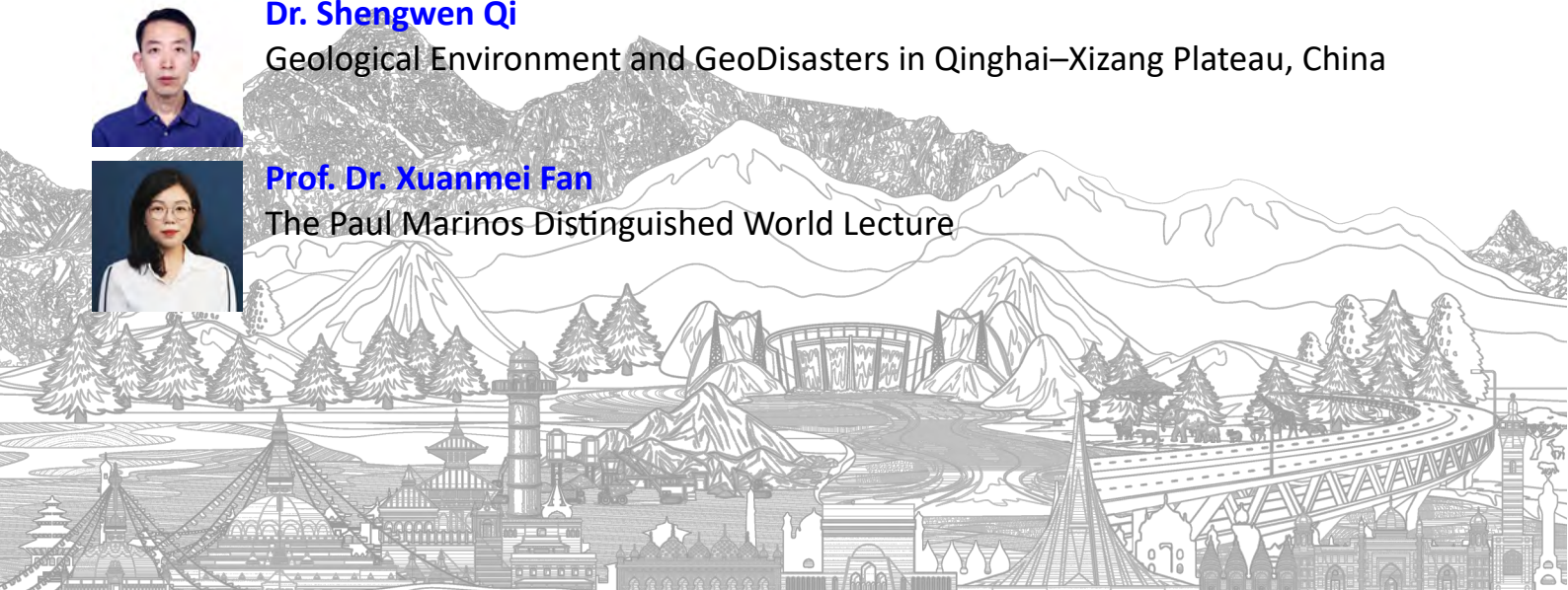
Dr. Shengwen Qi

Geological Environment and GeoDisasters in Qinghai–Xizang Plateau, China



Prof. Dr. Xuanmei Fan

The Paul Marinos Distinguished World Lecture



Keynote Speakers



Mr. Anil Pokhrel

A Multidisciplinary Approach to Disaster Risk Reduction in Nepal



Prof. Dr. Fawu Wang

Rapid and Long Runout Landslides Triggered by Different Liquefaction Mechanisms



Prof. Dr. Giovanna Vessia

Neo Deterministic Seismic Hazard Approach (NDSHA) for Seismic Response Analyses in urban areas. Case histories from Italian territory



Prof. Dr. Tümay Kadakci Koca

Erosion and Mass Wasting Processes in Post-Wildfire Mountainous Terrains: Impacts and Challenges

Invited Speakers



Prof. Md. Bodruddoza Mia

Climate Related Drought Hazards in the Northeastern Bangladesh



Prof. Dr. Yunus Ahmed Khan

Progressive failure analysis based on a method of non-vertical slices



Dr. Md. Shofiqul Islam

Tectonic Evolution and Seismic Hazards in Bangladesh: Insights from Geophysical and Geotechnical Studies



Dr. H M Sayem

Role of Suction in Unsaturated soils



Prof. Dr. Toru Terao

Asian Monsoon, Climate and Climate-Induced Hazards in the Asia and Pacific Region



Dr. Mike Winter

Debris Flow Risk to Roads and Road Users



Dr. Ko-Fei Liu

Wave Dynamics and Geohazards Monitoring

Invited Speakers



Dr. Sultana Nasrin Nury

Quantitative Analysis for Greening as an option for Sustainable City



Dr. Mahmuda Khatun

Establishment of Rainfall Thresholds for Shallow Landslide in Rangamati Sadar, Bangladesh



Prof. Dr. Tomochika Tokunaga

Land subsidence and subsurface environmental changes in the Tokyo Metropolitan Area, and possible groundwater management for urban sustainability



Prof. Dr. Jia-Jyun Dong

Random field modeling of subsurface stratigraphic/ parameters and its applications: Using the Taipei Basin as an example



P.Geol Ts. Ir. Dr. Goh Thian Lai

An Analog Study for Fracture Basement in Malaysia: Photogrammetry Fracture Mapping



Dr. Abd Rasid Jaapar

An Emerging Roles of Engineering Geologists in Geotourism including Geopark and Geosite Development: Some Case Studies from Malaysia



Prof. Dr. Atsuko Nonomura

Communication and application of engineering geology for community based disaster preparedness



The IAEG Bangladesh National Group (IBNG) and the Nepal Society of Engineering Geology (NSEG), have planned for the main theme of the congress as ***“Geological Engineering for Societal and Sustainable Development”***. Sub-themes of the congress include:

1. Engineering Geology and Geological Engineering for sustainable development

- 1.1 Geological Engineering from theory to practice
- 1.2 Engineering Geological Modeling
- 1.3 Geoethics in Engineering Geological Investigation
- 1.4 Case Studies for Engineering Geological Investigation
- 1.5 New Technology and Equipment for Engineering Geology
- 1.6 Geoparks and Disaster Museums for Sustainable Development

2. Neotectonics

- 2.1 Active Fault and associated earthquakes
- 2.2 Himalayan Tectonics
- 2.3 Crustal Dynamics and Recent Earthquake Sources
- 2.4 Special Session on “Engineering Geology Perspectives on the March 2025 Mandalay Earthquake and its effects in Myanmar, Thailand and China”

3. Landslides

- 3.1 Landslides, Debris Flows, and Rock Fall
- 3.2 Landslide Hazard and Risk Evaluation
- 3.3 Landslide Risk Reduction
- 3.4 Slope Stability
- 3.5 Urbanization on Mountain Slopes
- 3.6 Rock Slope Failure
- 3.7 Snow and Debris Avalanche
- 3.8 Cut slope failures
- 3.9 Large-Scale Landslides: Advanced Investigation, Monitoring, and Modelling
- 3.10 Formation of Landslides: Reconstruction, Mapping, Modeling, and Prediction under Different Influencing Factors

4. Hydro-climatic and Geological hazards in Developing Countries

- ## 4.1 Flood Hazards
- ## 4.2 Volcanic Hazards
- ## 4.3 Tsunami Hazards
- ## 4.4 Glacial Lake Outburst Floods (GLOFs)



5. Geotechnical and Geo-Environmental Engineering

5.1 Foundation Engineering

5.2 Ground Improvement Techniques

5.3 Unsaturated Soil Mechanics, Physical Properties of Soils, Geo-Environmental Issues

5.4 Soft Ground Treatments

5.5 Transportation Geotechniques

5.6 Earth Retaining Structures

5.7 Stability Analyses

5.8 Physico-chemical Environment of Soils

5.9 Geotechnical Modeling

5.10 Uses of Geopolymers in Geotech and Geo-Environment



6. Water Resources and Environmental Engineering

6.1 Water Resources and Watershed Management

6.2 Wastewater Treatment and Water Purification

6.3 Water Pollution in River, Lake and Coastal Area

7. Urban Geology, Urban Planning and Management – Engineering geological perspective

7.1 Environmental Assessment for Urban Development

7.2 Urban Design and Development Planning

7.3 Transportation Planning for Sustainable Development

7.4 Conceiving Reliable Engineering Geological Models for mining activities, infrastructures and building design, risk and urban planning



8. Engineering Hydrogeology and Management

8.1 Groundwater Management

8.2 Groundwater and Land Subsidence

8.3 Groundwater Monitoring and Restoration

8.4 Fractured Rock Hydrology



9. Tunneling and Role of Rock Mechanics in Developing Countries

9.1 Hard rock tunneling Issues and Development

9.2 Soft ground Tunneling Issues and Development

9.3 Rock Mechanics and Behaviours of Discontinuities in Hard Terrain

9.4 Tunneling in Challenging Geologies: Himalayan Experience and Global Perspectives



10. Remote Sensing and Geodesy

- 10.1 Remote Sensing and Geodesy in Geological Applications
- 10.2 Remote Sensing and Geodesy in Geotech/Geo-Environment
- 10.3 Remote Sensing and Geodesy in Water/Coastal Management
- 10.4 Remote Sensing and Geodesy in Urban Planning and Waste Management



11. Seismic Hazards, Earthquake Engineering and Structural Analysis

- 11.1 Engineering Geological and Geotechnical Consequences
- 11.2 Earthquake Engineering and Ground Response
- 11.3 Geotechnical Earthquake Engineering and Soil Dynamics
- 11.4 Retrofitting Structures
- 11.5 Structural Damages and Fatigues in Structures
- 11.6 Future of Himalayan Earthquake
- 11.7 Coseismic Landslides: From Case Histories to Risk Assessment
- 11.8 Seismic hazard analysis
- 11.9 Earthquake Safe Buildings in Developing Countries



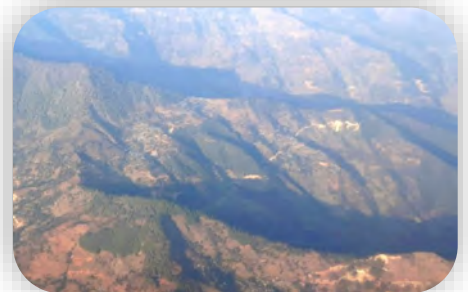
12. Consequences of Geo-Disasters and Disaster Risk Management

- 12.1 Assessment of Geohazard Chains in high Mountain Regions
- 12.2 Seismic consequences in Social Welfare and Mental Trauma
- 12.3 Effects of Flooding/Tsunami/Storm in Infrastructures
- 12.4 Effects of Flooding/Tsunami/Storm in Social Welfare and Mental Trauma
- 12.5 Volcanic Disasters and Management
- 12.6 Landslide Risk Management
- 12.7 Disaster Risk Reduction
- 12.8 Disaster Risk Resilience and Disaster Management
- 12.9 Engineering Geologists in Risk Communication



13. Dimension Stones and Quarry Sites

- 13.1 Reserves and Utilization of Dimension Stones
- 13.2 Construction materials and aggregates for developing countries
- 13.3 Disposal of Mine Wastes and Mine Tail



14. The role of women in development of engineering geology

15. Climate change and related geopolitics

16. Landfill engineering and solid waste management

17. The Training and Education in Engineering Geology

- 17.1 Communication and education based on the knowledge of engineering geology
- 17.2 Global Engineering Geology Education – present and future directions

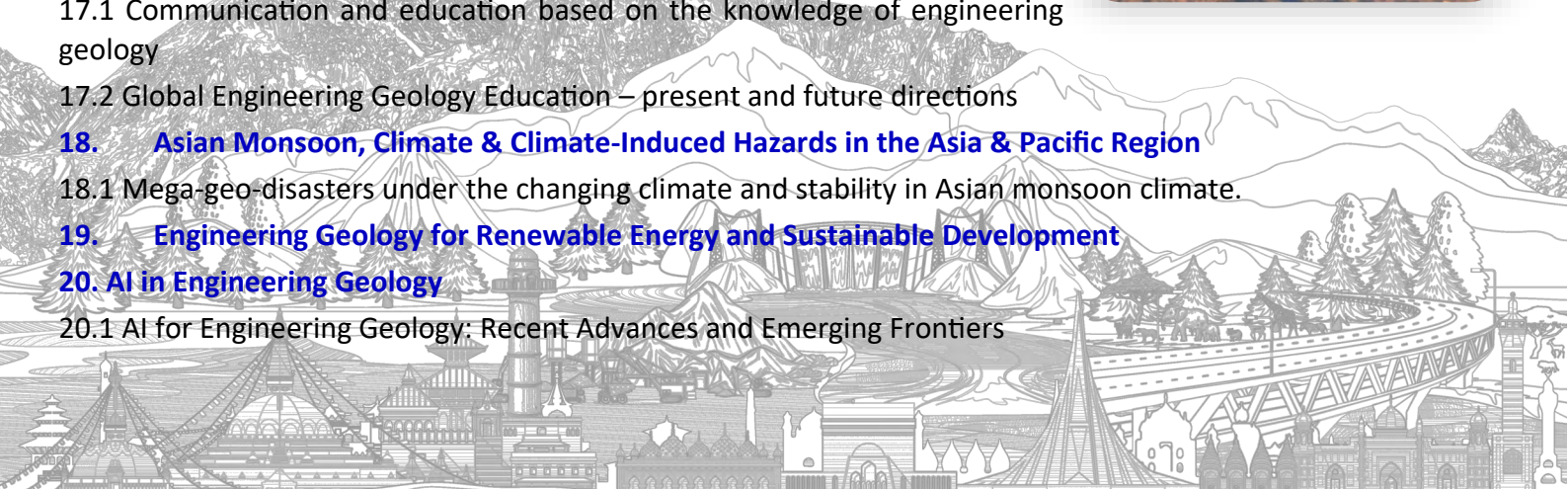
18. Asian Monsoon, Climate & Climate-Induced Hazards in the Asia & Pacific Region

- 18.1 Mega-geo-disasters under the changing climate and stability in Asian monsoon climate.

19. Engineering Geology for Renewable Energy and Sustainable Development

20. AI in Engineering Geology

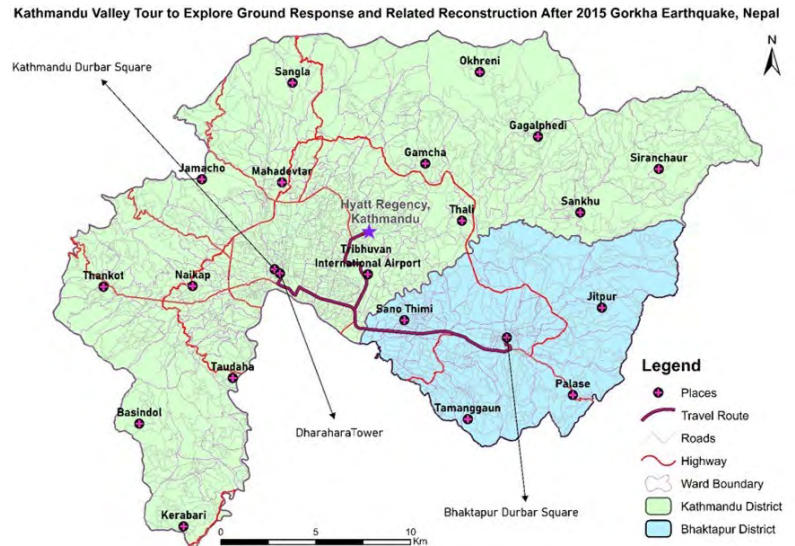
- 20.1 AI for Engineering Geology: Recent Advances and Emerging Frontiers



Date: 2025-11-26 Conference Excursion Schedule

Ex-2: A Full Day Kathmandu Valley Tour to Explore Ground Response and Related Reconstruction After the 2015 Gorkha Earthquake, Nepal

Time	Schedule
8:00	Departure from Venue Hotel
9:00	Arrival at Bhaktapur Durbar Square
9:00 – 11:30	Observation of Reconstructed Monuments
11:30 – 13:00	Lunch at Bhaktapur
13:00 – 14:00	Travel to Kathmandu Durbar Square
14:00 – 15:30	Observation at Kathmandu Durbar Square
15:30 – 16:00	Travel to Dharahara Tower
16:00 – 17:00	Visit Newly Constructed Dharahara Tower
17:00	Return to Venue Hotel



Route map showing the excursion path from Bhaktapur Durbar Square to Dharahara Tower for Excursion 2.



Kathmandu Darbar Square



Bhaktapur Durbar Square

Date: 2025-11-26 Conference Excursion Schedule

Ex-3: A Full Day Tour to Explore Engineering Geological Setting of the Kathmandu Valley.

Time	Schedule
8:00	Departure from Venue Hotel
9:00	Arrival at Chovar Gorge
9:00 – 10:00	Field observation of Chovar Gorge and surrounding
10:00 – 10:30	Arrival at Nakkhu River Flood Damage Site
10:30 – 11:30	Observation of Nakkhu River Flood Damage Site
11:30 – 13:00	Lunch (Nepali Traditional Cuisine)
13:00 – 14:00	Arrival at Nagdhunga Road Tunnel Site
14:00 – 17:00	Observation of Nagdhunga Tunnel and surrounding
17:00	Return to Venue Hotel



Figure 3: Route map showing the excursion path for Excursion 3.



Date: 2025-11-30 to 2025-12-2 Conference Tour Schedule

Ex-6: Engineering Geology Insights: Exploring the Tea Farming Landscapes of Far Eastern Nepal from Jhapa to Ilam (Three Days- 1h fly from Kathmandu in Airplane and Bus Trip in Jhapa and Ilam)

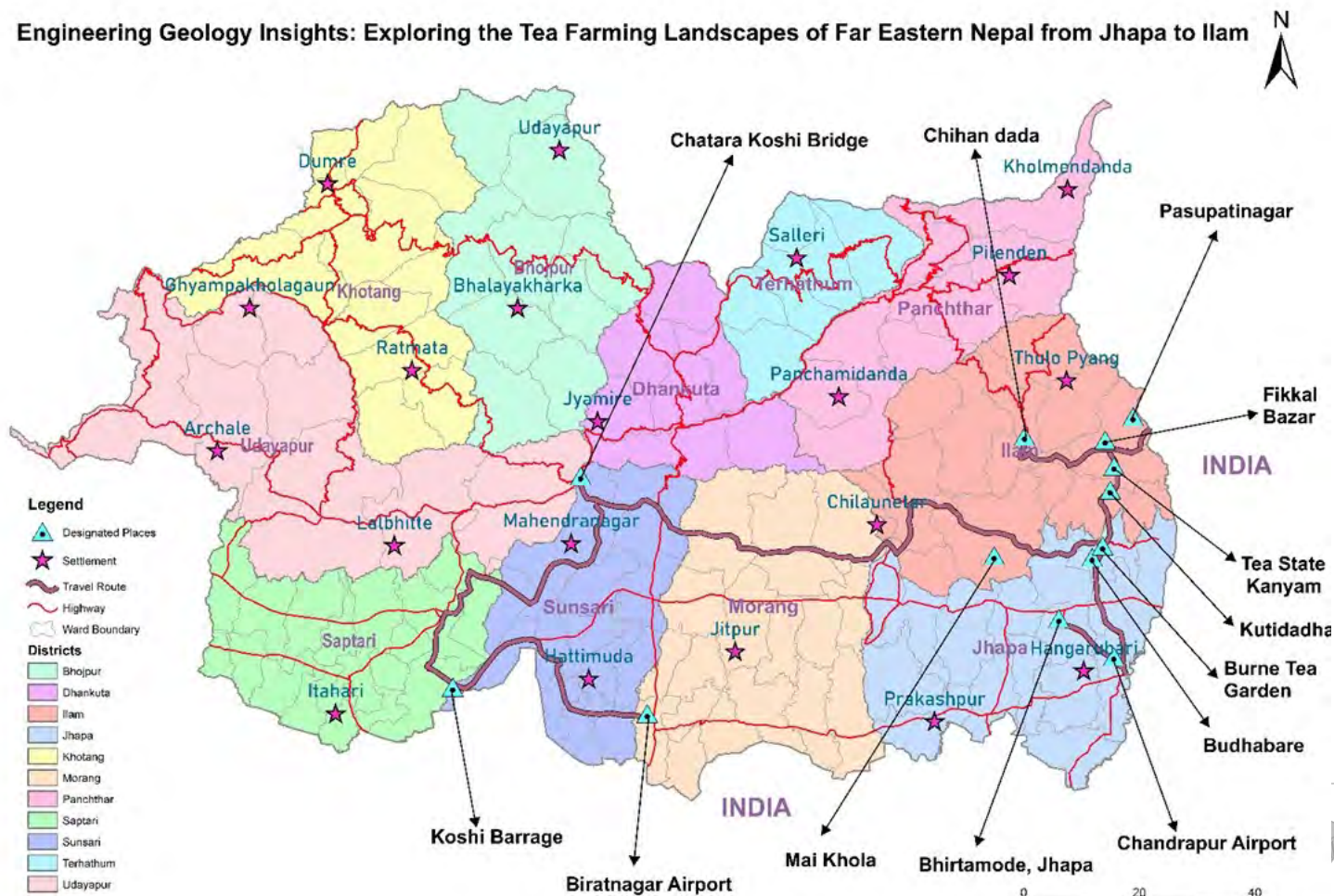
Time	Schedule
Day 1 (2025-11-30): Kathmandu – Biratnagar – Jhapa	
8: 00	Departure from Venue Hotel, Kathmandu
8:30	Arrival at Tribhuvan International Airport
9: 30 – 10:30	Flight to Biratnagar from TIA
10: 30	Arrival at Biratnagar Airport
10: 30 – 12:00	Biratnagar Airport to Chatara Koshi bridge
12:00 – 13:00	Lunch at Koshi Bridge, Chatara
13:00 – 14:00	Observation of Koshi sediment, MFT and Siwalik
14:00 – 15:30	Moving to Koshi Barrage
15:30 – 16:00	Observation of 63 yrs old Koshi Barrage
16:00 – 18:45	Travel to Birtamod, Jhapa
18:45	Stay at Jhapa
Day 2 (2025-12-01): Jhapa – Ilam	
8: 00	Departure from Jhapa to Ilam
8: 30 – 9:00	Observation of Main Frontal Thrust (MFT) at Budhabare
9:00 – 9:30	Arrival and Observation of MBT at Chihandada
9:30 – 10:00	Arrival and Observation of Lesser Himalayan Rock at Kutidada
10:00 – 10:30	Arrival and Observation of Tea State
11:00	Arrival at Tea State at Kanyam
11:30 – 12:30	Observation and enjoy the surrounding of Tea State at Kanyam
12:30 – 13:30	Lunch at Fikkal Bazar
14:30	Arrival at Maikhola
14:30 – 16:00	Observation of Creeping Landslide at Maikhola
16:30	Arrival and stay at Ilam
17:30	Free time, evening walk at Tea State
16:00	Moving to Hotel
19:30	Dinner at Hotel
Day 3 (2025-12-02): Pasupatinagar to Kathmandu	
8: 00	Departure from Pasupatinagar
11:30	Arrival at Kakarbhitta
11:30—12:30	Lunch
<u>Interested participants can go to India from the border, be careful that you have valid Indian Visa</u>	
14:00	Departure from Bhadrapur Airport to Kathmandu
16:00	Arrival at Venue Hotel in Kathmandu



Kathmandu - Biratnagar-Jhapa



Engineering Geology Insights: Exploring the Tea Farming Landscapes of Far Eastern Nepal from Jhapa to Ilam





Women in Engineering Geology

WEG Session in ARC-15 of IAEG

Empowering Women in Engineering Geology

JOIN US TO LEARN FROM AND WITH WOMEN IN ENGINEERING GEOLOGY

Session
Convener:
IAEG-
WEG Chair



Ann Williams

Coordinators:



Anjila Malla
NSEG-
WEG Chair



Mahmuda Khatun
IBNG-
WEG Chair

WHO SHOULD ATTEND?

- Men and women professionals in Geoscience and Engineering
- Industry leaders and policymakers
- Anyone advocating for gender diversity in STEM fields
- Students and early-career Geologists

KEY THEMES

Breaking down barriers
Overcoming gender based challenges in the field of engineering geology.
Leadership & mentorship
Inspiring the next generation of women engineering geologists.
Innovations & contributions
Showcasing success stories and research by women in engineering geology.
Opportunities & networking
Building a strong global community of women and advocates for women in engineering geology.



WHY ATTEND?

- Gain valuable insights from experienced women in engineering geology
- Connect with professionals and expand your network
- Explore opportunities for mentorship and career growth

CONFERENCE ATTRACTIONS:

- Pre-conference ice-breaker hike for women sponsored by NSEG
- Panel discussion
- Quick fire research presentations
- Short interactive workshop
- Poster/photo exhibition

Scan here for
registration



Together, let's shape a more inclusive future in engineering geology

ARC-15 of IAEG

★ Register Now! Secure your spot for this session

✉ Contact Us: arc15ktm@gmail.com 🌐 More Info: <https://arc15.nseg.org.np/>

"Elevating Young Talent in Engineering Geology"

Empowering Young Engineering Geologists: Embracing New Roles through IAEG



JOIN
US



YEG Session in ARC-15 of IAEG



Call for Abstract

KEY THEMES:

- Leadership and Career Development in Engineering Geology
- The Role of Young Engineering Geologists in Disaster Management and Mitigation
- Innovation and Entrepreneurship in Engineering Geology
- Global Collaboration among Young Engineering Geologists

WHY ATTEND?

- Hear from fellow young professionals and learn from experienced mentors.
- Explore emerging tools, techniques, and innovations in the field.
- Discover career pathways, internships, and job opportunities.
- Develop your leadership and technical skills
- Expand your professional network and join a global movement to amplify the voice and impact of young professionals in Engineering Geology and Geotechnical Engineering

WHO SHOULD ATTEND?

- Early-career professionals in Engineering Geology and Geotechnical Engineering
- Students and recent graduates
- Academic researchers and educators
- Industry practitioners interested in mentoring or engaging with young talent
- Geological engineering societies and associations

Session Convener:



Dr. Stratis (Efstratios) Karantounis
(IAEG-YEG Chair)

CONFERENCE ATTRACTONS:

- Pre-Conference Hike-a networking kickoff for YEG members sponsored by NSEG
- Interactive Panel Discussion with experts
- Rapid-Fire Research Presentations
- Brief Hands-On Workshop
- Poster And Photo Exhibition

Session Coordinators:



Mr. Shailesh Pantha
(NSEG-YEG Chair)



Mr. Om Prasad Divakal
(NSEG-IAEG-YEG member)



Mr. Shafigul Islam Samy
(IBNG-YEG Secretary)

Organizers:

Co-organizers:



Secure your spot for this session

**15TH ASIAN REGIONAL
CONFERENCE OF IAEG**



Register
Now!

Conference Registration

All interested participants are requested to fill pre-registration form available in the conference website (<https://arc15.nseg.org.np>). Details on registration fee is given below, and it is decided on a basis of number of pre-registered participants and their suggestions. Registration fee will cover access to all presentation sessions, a copy of abstract volume, one reception dinner, conference lunches, and tea/coffee during the breaks. It does not cover the cost of other dinners and hotel accommodations.

Category	Early Bird	Regular	Full
	(Before June 15, 2025)	(Before October 15, 2025)	(After October 15, 2025)
All Participants	\$550	\$650	\$750
Woman in Engineering Geology (WEG)	\$450	\$550	\$650
Young Engineering Geologists (YEG)	\$270	\$370	\$470
Students	\$270	\$370	\$470
Low and Lower-Middle Income Country (According to World Bank)	\$350	\$400	\$450
WEG from Low and Lower-Middle Income Country (According to World Bank)	\$300	\$350	\$400
YEG from Low and Lower-Middle Income Country (According to World Bank)	\$200	\$250	\$300
Student from Low and Lower-Middle Income Country (According to World Bank)	\$200	\$250	\$300
Official Participant from Nepal and Bangladesh*	NRs. 25,000	NRs. 35,000	NRs. 45,000
Non-member Participant from Nepal and Bangladesh*	NRs. 20,000	NRs. 25,000	NRs. 30,000
NSEG or IBNG Member*	On site payment on Nov 24-26, 2025		

***Mode of payment: Nepali Bank Cheque or Cash only**

Passport and Visa Requirement

All the foreign participants are advised to contact the Nepalese Embassy or Consulate in their respective countries to get visa for entering into Nepal. They must have valid passport and visa to enter into Nepal. Visa can also be obtained in the Tribhuvan International Airport (Kathmandu) on arrival. For those of you planning to acquire a visa upon arrival at the airport, please bring with you two passport-sized photographs and US\$30 cash for the visa fee. Gratis Visa is available for SAARC nationals visiting Nepal since 2014. We request you to claim Gratis Visa if it is applicable to you. To apply for a Nepal visa, you need to submit an online application through the portal of the [Department of Nepal Immigration](https://nepalimmigration.gov.np). Detail about Nepal Visa is available in conference web site (<https://arc15.nseg.org.np/>) also.

Submitted Sessions:

SN	Theme	Session Title	Session Convener
1	2. Neotectonics Subtheme 2.4	Special Session for Engineering Geology Perspectives on the March 2025 Mandalay Earthquake and its effects in Myanmar and Thailand and China	Dr. Janusz Wasowski, senior research associate, CNR-IRPI (National Research Council of Italy) Email: janusz.wasowski@cnr.it
2	3. Landslides Subtheme 3.9	Large-Scale Landslides: Advanced Investigation, Monitoring, and Modelling	Univ. Prof. Mag. Dr. Christian Zangerl BOKU University, Department of Landscape, Water and Infrastructure, Institute of Applied Geology, Vienna, Austria E-mail: christian.j.zangerl@boku.ac.at
3	3. Landslides Subtheme 3.10	Formation of Landslides: Reconstruction, Mapping, Modeling, and Prediction under Different Influencing Factors	Dr. Łukasz Pawlik, Associate Professor Institute of Earth Sciences, University of Silesia, Poland E-mail: lukasz.pawlik@us.edu.pl
4	5. Geotechnical and Geo-Environmental Engineering Subthemes 5.3:	Unsaturated Soil Mechanics, Physical Properties of Soils, Geo-Environmental Issues	Prof. Dr. ATM Shakhawat Hossain, Geological Engineering, Geohazards & Disaster Sciences Research Group, Department of Geological Sciences, Jahangirnagar University, Dhaka, Bangladesh. E-mail: shakhawathos2004@yahoo.com
5	7 Urban Geology, Urban Planning and Management Subtheme: 7.4	Conceiving Reliable Engineering Geological Models for mining activities, infrastructures and building design, risk and urban planning	Prof. Dr. Vessia Giovanna University "G.d'Annunzio" of Chieti-Pescara, Italy E-mail: g.vessia@unich.it
6	12 Consequences of Geo-Disasters and Disaster Risk Management Subtheme: 12.1	Assessment of Geohazard Chains in high Mountain Regions	Prof. Dr. Hans-Balder Havenith Liege University, Belgium Email: hh.havenith@uliege.be
7	12 Consequences of Geo-Disasters and Disaster Risk Management Subtheme: 12.6	Landslide Risk Management	Dr. Mike Winter Director, Winter Associates Limited, UK Email: winter@winterassociates.co.uk
8	14 The role of women in development of engineering geology	The role of women in development of engineering geology	Ann Williams (IAEG-WEG Chair) BECA, New Zealand Email: ann.williams@beca.com
9	17 The Training and Education in Engineering Geology Subtheme: 17.1	Communication and education based on the knowledge of engineering geology	Prof. Dr. Atsuko Nonomura Kagawa University, Takamatsu, Japan Email: nonomura.atsuko@kagawa-u.ac.jp
10	18 Asian Monsoon, Climate & Climate-Induced Hazards in the Asia & Pacific Region Subtheme: 18.1	Mega-geo-disasters under the changing climate and stability in Asian monsoon climate.	Prof. Dr. Toru Terao Kagawa University, Takamatsu, Japan Email: terao.toru@kagawa-u.ac.jp
11	20 AI in Engineering Geology Subtheme: 20.1	AI for Engineering Geology: Recent Advances and Emerging Frontiers	Dr. Ashok Dahal, Assistant Professor of AI for Early Warning Systems University of Twente, The Netherlands Email: a.dahal@utwente.nl

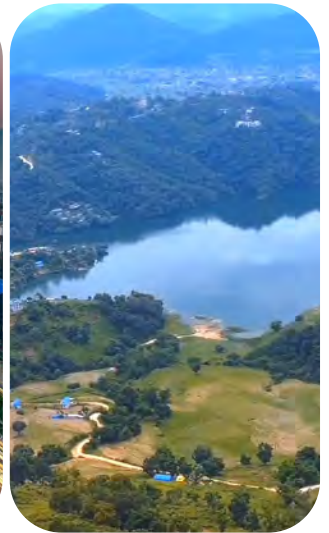


15TH ASIAN REGIONAL CONFERENCE OF IAEG



JOINTLY ORGANIZED BY NEPAL AND BANGLADESH
KATHMANDU, NEPAL | 27-29 NOVEMBER, 2025

Welcome to Nepal



Contact Information:

The 15th Asian Regional Conference of IAEG

Conference Office

Nepal Society of Engineering Geology (NSEG)

Dhobighat, Lalitpur, Nepal

Phone: +977-9851060464, +977-9851154970

Email: arc15ktm@gmail.com, arc15ktm@nseg.org.np

NSEG Email: nsegnepal@gmail.com, info@nseg.org.np



Get more details of ARC-15

by scanning this QR

Sponsors:

BRUGG
Geobrugg

Geotech Solutions International
A VENTURE OF GSI Group

BGC

Visit us at: <https://arc15.nseg.org.np/>

Theme 17. The Training and Education in Engineering Geology

Subtheme 17.1: Communication and education based on the knowledge of engineering geology

Session Convener:

Dr. Atsuko Nonomura, Kagawa University, Japan, Email: nonomura.atsuko@kagawa-u.ac.jp

Session Coordinators: Shuich Hasegawa

Session Description

In order to achieve a resilient and sustainable society, communication and education based on applied geology are necessary at various levels, including schools, engineers, and local communities. In this session, let's share ideas with participants through various examples of approaches to learn engineering geology.

Aim of the Session

In recent years, there have been many cases of sediment-related disasters around the world. In order to mitigate damage, knowledge and technology from applied geology are needed in various situations. In addition, disaster prevention education is essential for protecting ourselves from natural disasters. It is important to deepen our understanding of past and future phenomena through communication and education in the field, not just through classroom learning. Please present the findings you have obtained through knowledge transfer activities based on applied geology in various forms. We hope that this will enable participants to share tips that will be useful for future activities.

Invited lecture (20min)

Communication and application of engineering geology for community based disaster preparedness